

# How to TILE SUCCESSFULLY



Specialist advice and expertise for any tiling project, from the world's leading supplier of tiling tools and accessories.

## PREPARE

### Wall Tiles



Ensure the surface is as flat as possible. Use a spirit level to ensure the wall is level.



Measure the wall dimensions using a Vitrex Tape Measure and find the centre of the wall, so you can work out the start point of the tile.



Mix the adhesive prior to placing the tiles on the wall. You can use a Vitrex Power Mixer. Follow adhesive instructions.

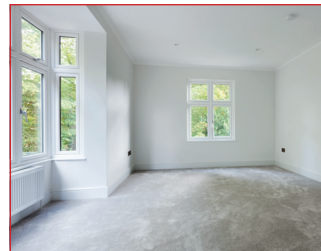
### Floor Tiles



Measure every corner to check that the room is square. If the room is not square, you'll need to work out where to put your angled cuts so they are least noticeable.



If you're tiling a doorway, plan to run the tiling pattern all the way through as it looks far better.



If you have a picture window, an archway or other prominent feature, it helps the layout to centre your tiles in this and work outwards.

## CUT



After the tiles have been laid using Vitrex Lash Levelling System, you will need to cut the remaining tiles to size.

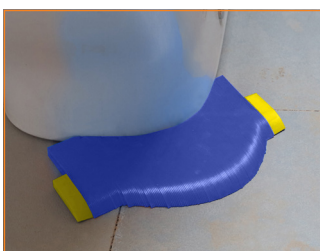


It is worth investing in a Vitrex Electric Tile Cutter. They slice through most tile types in seconds and are extremely easy to operate.



For repetitive straight cuts, it is worth investing in a Vitrex Manual Tile Cutter.

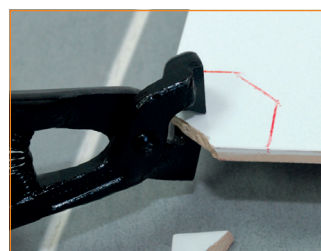
## SHAPE



Use a Vitrex Profile Gauge to fit tiles around shaped areas such as pipes and wash basins.



To smooth sharp and uneven edges, use a Vitrex Tile File. File away from the glazed edge.



Use a Vitrex Tile Nipper to make awkward small cuts or nibbles until the desired shape is achieved.



## TILING TOOL KIT ESSENTIALS

Wall or Floor Tile Spacers

Tile Adhesive

Notched Spreader

Adhesive Trowel

Tile Cutter

Tile Nipper

Tile Edge Trim

Grout

Grout Spreader / Float

Grout Sponges

Safety Wear: Knee Pads

Safety Wear: Specs

## OTHER USEFUL TOOLS

Tile Lift

Tile File

Tile Edge Trim Cutter

Grout Mixer

Grout Finishing Tool

Tile Shaping Template

Tile Saw

Tile Marker



# FIX



Spread the adhesive according to the manufacturers instructions. Use a Vitrex Notched Adhesive Trowel for the best results. Spread about 2 square metres at a time.



Start laying your tiles, adding Vitrex LASHXL Spacers and Wedges or use a choice of Vitrex Tile Spacers.



Check with a spirit level that the tiles are square. If using Vitrex LASHXL, use Lash Pliers to tighten the Wedge into the Spacer. Once dry, Wedges can be removed.

# HELPFUL HINTS

tips from the professionals

**Always mix the tiles well - to avoid uneven colour variation**

**When laying tiles on wooden floors, fix marine plyboard first - and always buy flexible adhesive and grout**

**Always select the same width border / trim as your tiles, to keep the grout line consistent**

**Using a decoupling mat before applying adhesive prevents substrate movement from affecting tiles, ensuring a long-lasting, crack-free finish**

**Use tile drills when drilling holes into tiles. Always cover the area with masking tape first**

**Always wear safety goggles when cutting tiles. Knee pads are essential when laying floor tiles**

# FINISH



Work the grout in well using a Vitrex Grout Float or Spreader. Again, cover about a square metre at a time.



Use the Vitrex Dual Purpose Grouting Sponge to remove excess grout. When dry, polish with a soft cloth. The Vitrex Grout Sponge is also perfect for keeping your tiles clean during installation as well as after.



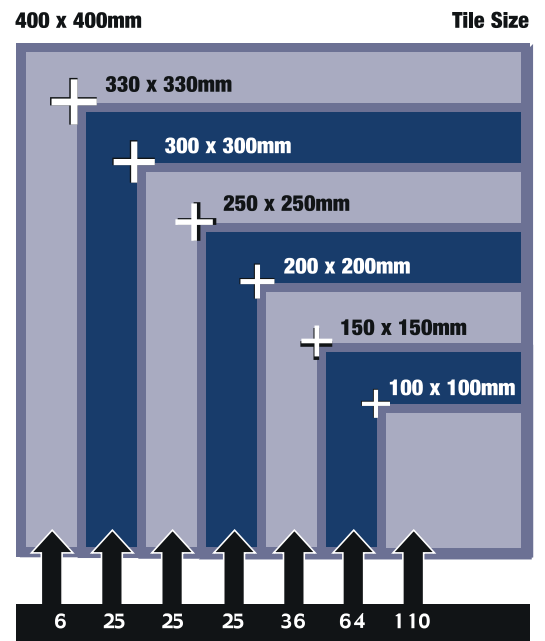
When the tiled surface joins another surface, apply silicone sealant. Use a Vitrex Flexi-Tip Sealant Smoother for a perfect watertight seal.

## How many tiles do I need

Square Metres	1	2	3	4	5	6	7	8	9	10
75 x 75	178	356	534	712	889	1067	1245	1423	1600	1778
100 x 100	100	200	300	400	500	600	700	800	900	1000
150 x 150	45	89	134	178	223	267	312	356	400	445
200 x 100	50	100	150	200	250	300	350	400	450	500
200 x 200	25	50	75	100	125	150	175	200	225	250
250 x 250	16	32	48	64	80	96	112	128	144	160
300 x 300	12	23	34	45	56	67	78	89	100	112
330 x 330	10	19	28	37	46	56	65	74	83	92
400 x 400	7	13	19	25	32	38	44	50	57	63
450 x 450	5	10	15	20	25	30	35	40	45	50
500 x 250	8	16	24	32	40	48	56	64	72	80
500 x 500	4	8	12	16	20	24	28	32	36	40
600 x 300	6	12	17	23	28	34	39	45	51	56
600 x 600	3	6	9	12	14	17	20	23	26	28

Number of tiles required

## How many tile spacers do I need



READY RECKONER: Tile spacers required per m<sup>2</sup>